



JOYA

FITTING INSTRUCTIONS

RECOMMENDATIONS.....	PAGE 1
BASIN UNIT INSTALLATION.....	PAGE 2 A 5
TALL UNIT INSTALLATION.....	PAGE 6 A 7
BENCH DPPP ADJUSTMENT	PAGE 7
MIRROR INSTALLATION	PAGE 8 A 9

Important:

- Unpack the units carefully ensuring not to scratch them with the knife blade. Inspect every item carefully before installation as no claim for faults or damages will be accepted once the item is installed.
- We recommend that you use protection (for example a blanket) to cover the working area. Mirrors and worktops are very fragile, we recommend that you put them on battens (and never directly onto the floor).
- Our furniture is designed to be fitted on a level, flat finished wall.
- It is imperative that you use a sanitary grade silicone sealant at the back and sides of every worktop as water infiltrations will damage your unit and this is not covered under our product guarantee.
- All surfaces of all units should not be exposed to standing water or persistent humidity. They must be wiped and dried off immediately after use. If your unit is not cared for correctly it will deteriorate and this will not be covered under our product guarantee.
- All our units are guaranteed for 10 years* from date of invoice (1 year for mirrors, electrical items, cisterns, WC frames, sanitary ware, taps and accessories) against all manufacturing defects acknowledged by our company, limited to domestic users.
- The guarantee does not apply to any products that have been misused or abused in any way. The products must be installed and cared for in line with our fitting instructions, local water byelaws, IEE electrical directives and any other applicable regulations.
- In the unlikely event that the product fails within 10 years* (1 year for mirrors, electrical items, cisterns, WC frames, sanitary ware, taps and accessories), we offer a free of charge replacement part (or nearest equivalent). Liability is limited to individual products and does not cover consequential loss/damage or any further unfitting/refitting costs or financial compensation. The customer will be required to pay for the installation cost of the replacement part.

* Upon completion and registration of the enclosed Guarantee card, refer to general terms of sale

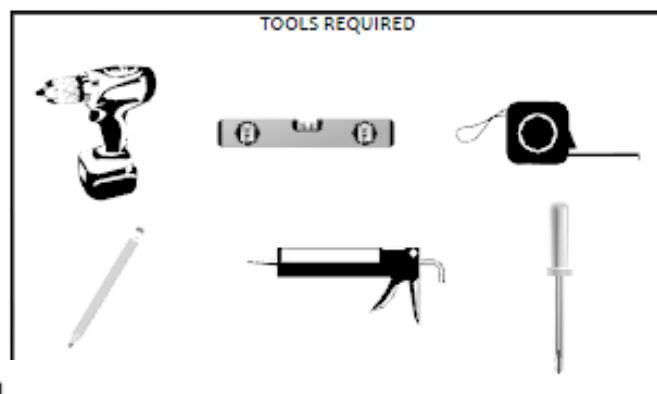
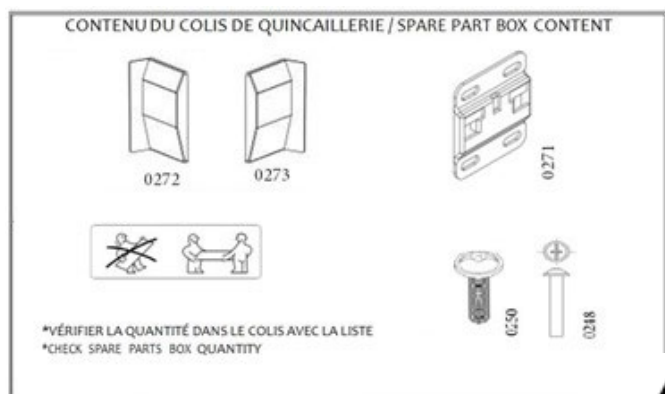
MAINTENANCE:

- Wipe and rinse the surface of the furniture after contact with any chemical product.
 - Do not use abrasive cream (cif, etc...), wire wool, scouring pad, solvent, acid, etc...
 - Dry the surface off with a soft cloth after cleaning
 - For mirrors, use a chamois leather, and dry the edges with a suitable soft cloth.
 - Use a dry cloth to clean any electric components, they must be switched off
- OUR FURNITURE WILL DETERIORATE THROUGH EXCESSIVE WATER SPILLAGE OR HEAVY CONDENSATION. IT IS ADVISED THAT EVERY BATHROOM SHOULD BE WELL VENTILATED AND FITTED WITH A SUITABLE EXTRACTOR FAN TO AVOID ANY PERSISTENT HUMIDITY AND ALL FURNITURE SHOULD BE PROTECTED WITH BATH/SHOWER SCREEN ENCLOSURES TO PRESERVE THEIR QUALITY.

ELECTRICAL INSTALLATION:

All Ambiance Bain units fitted with electrical components (mirrors, mirrored cabinets, sockets, etc...) must only be installed in ZONE 3. Installation and fitting of all electrical items must be completed by a qualified electrician. Any final decisions regarding the installation should also be made by the electrician. All electrical items must be tested prior to installation, as liability is limited to replacement items only.

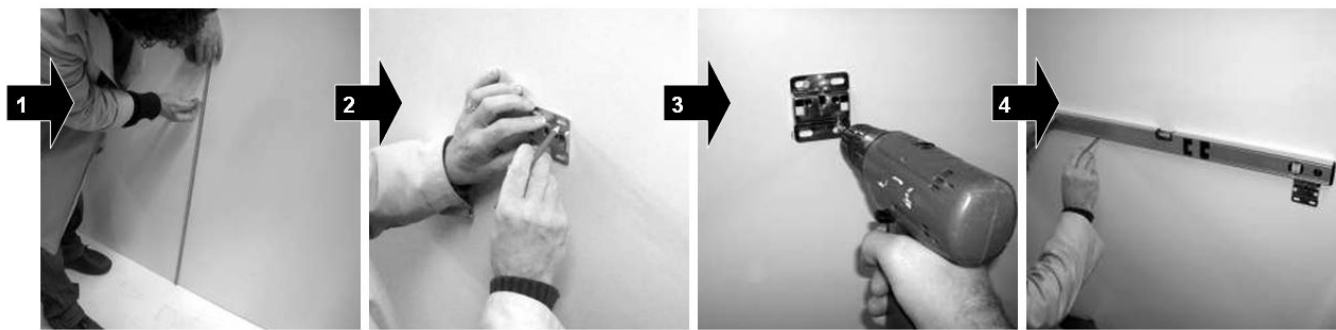
All information is downloadable from the website www.ambiancebain.co.uk



Ab
ambiance bain

BASIN UNIT INSTALLATION

1. FIX THE WALL PLATES «0271» (screws and wall plugs not included)

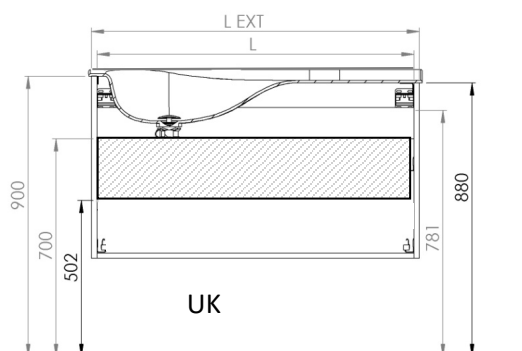


1
Determine the finished height

2
Position the wall plate, mark and drill

3 Fix the first wall plate

4 Place the second wall plate aligning it with the first one

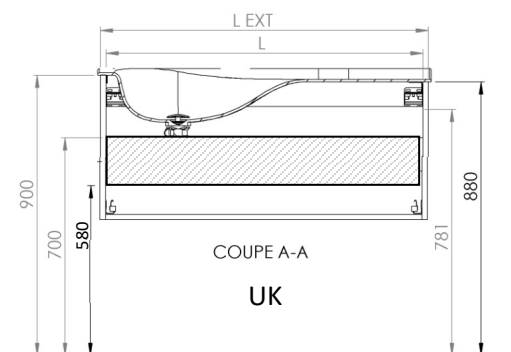


All dimensions are in mm.

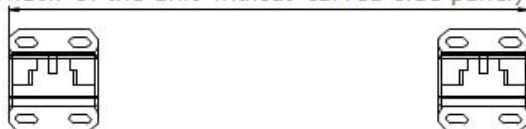
The dimensions are given to the bottom of the wall plate.



Incoming supply area



(Largeur du caisson sans coté finition) - 34 mm
(Width of the unit without curved side panel) - 34 mm



CODE MEUBLE	L EXT	L
BVT5647080JOYGEG	800	766
BVT3047080JOYGG	800	766
BVT5647080JOYGG	800	766
BVT5647080JOYDD	800	766
BVT3047080JOYDD	800	766
BVT5647080JOYDED	800	766
BVT3047105JOYG	1050	1016
BVT3047105JOYGG	1050	1016
BVT5647105JOYG	1050	1016
BVT5647105JOYGE	1050	1016
BVT5647105JOYGEG	1050	1016
BVT5647105JOYGEG2	1050	1016
BVT5647105JOYGG	1050	1016
BVT3047105JOYD	1050	1016
BVT3047105JOYDD	1050	1016
BVT5647105JOYD	1050	1016
BVT5647105JOYDD	1050	1016
BVT5647105JOYDE	1050	1016
BVT5647105JOYDED	1050	1016
BVT5647120JOYD	1200	1166
BVT5647120JOYG	1200	1166
BVT5647120JOYDPU	1200	1166
BVT5647120JOYGPU	1200	1166

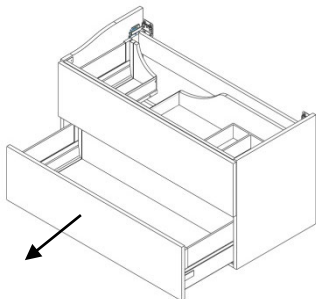
CODE MEUBLE	L EXT	L
BVT4047080JOYD	800	766
BVT4047080JOYDD	800	766
BVT4047080JOYDDPU	800	766
BVT4047080JOYDPU	800	766
BVT4047080JOYG	800	766
BVT4047080JOYGG	800	766
BVT4047080JOYGGPU	800	766
BVT4047080JOYGPU	800	766
BVT4047105JOYD	1050	1016
BVT4047105JOYDD	1050	1016
BVT4047105JOYDDPU	1050	1016
BVT4047105JOYDPU	1050	1016
BVT4047105JOYG	1050	1016
BVT4047105JOYGG	1050	1016
BVT4047105JOYGGPU	1050	1016
BVT4047105JOYGPU	1050	1016
BVT4047120JOYD	1200	1166
BVT4047120JOYDPU	1200	1166
BVT4047120JOYG	1200	1166
BVT4047120JOYGPU	1200	1166



CAUTION:
Ensure that you use the correct fixing according to the type of wall construction.

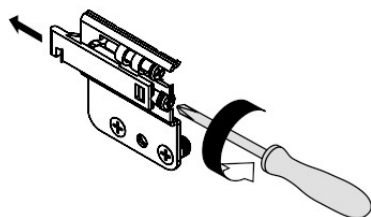
BASIN UNIT INSTALLATION

2. REMOVE THE DRAWERS, SEE SEPARATE INSTRUCTIONS ATTACHED

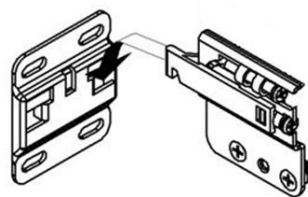


CAUTION :
Use wedges to put the unit on the floor

3. LOOSEN THE WALL HANGING BRACKETS ON THE UNIT



4. HANG THE UNITS ONTO THE WALL PLATES



5. MARK THE FIXING BRACKETS



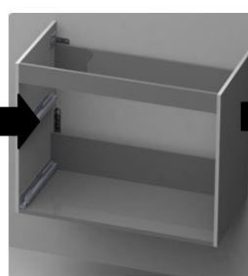
1
Adjust the level of the unit



2
Fixing the brackets on the unit



3 Mark the holes of the additional support brackets



4 Remove the unit



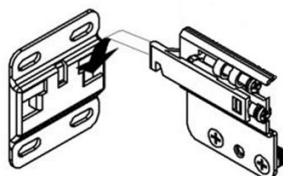
5 Drill the holes (screws and wall plug not provided)



CAUTION:
Ensure that you use the correct fixing according to the type of wall construction.

BASIN UNIT INSTALLATION

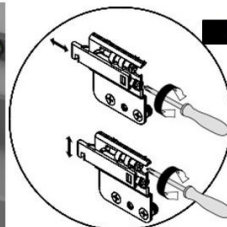
6. FIX THE UNIT ONTO THE WALL



1 Hang the unit onto the wall plates



2 Tighten the brackets on the unit so that the furniture fits to the wall and adjust the levels

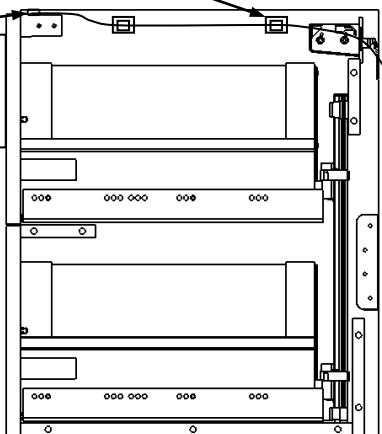


3 Fix the additional support to the wall (screw and wall plug not provided)

LED OPTION

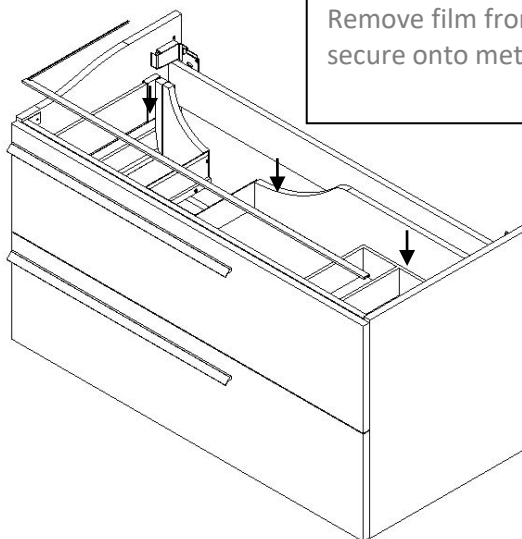
2. Use self adhesive clips to tidy loose cables

1. Leds lighting



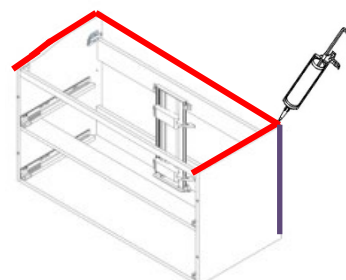
3.

Remove film from adhesive strip and secure onto metal top rail



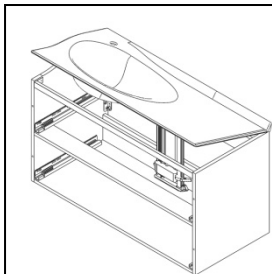
BASIN UNIT INSTALLATION

7. APPLY SILICONE ON TOP AND SIDE OF UNIT



BASIN UNIT INSTALLATION

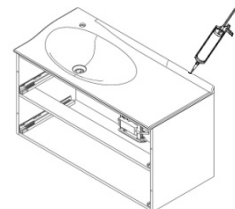
8. *INSTALL THE SMO TOP ON THE UNIT*



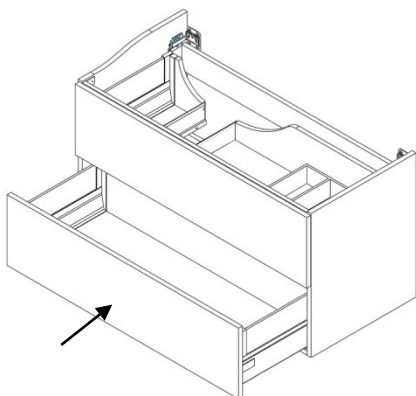
ADVICE:

Fit the basin back towards the wall then lower onto unit.

APPLY SILICONE



9. *FIT AND ADJUST THE DRAWERS, SEE SEPARATE INSTRUCTIONS ATTACHED*

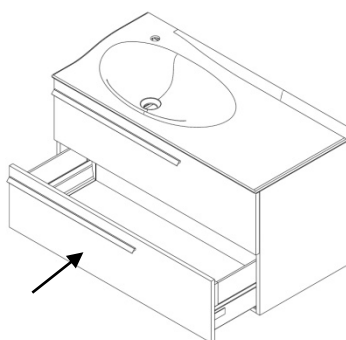


CAUTION :

Use wedges to put the unit on the floor

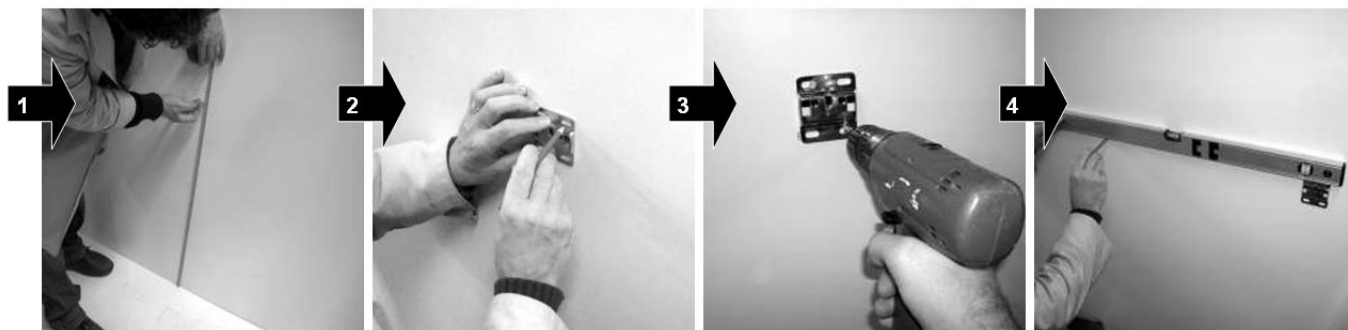
*Make sure the unit is level
So that the adjusting is not too difficult*

10. *FIX THE HANDLES*



TALL UNIT INSTALLATION

1. FIX THE WALL PLATES «0271» (screws and wall plugs not included)

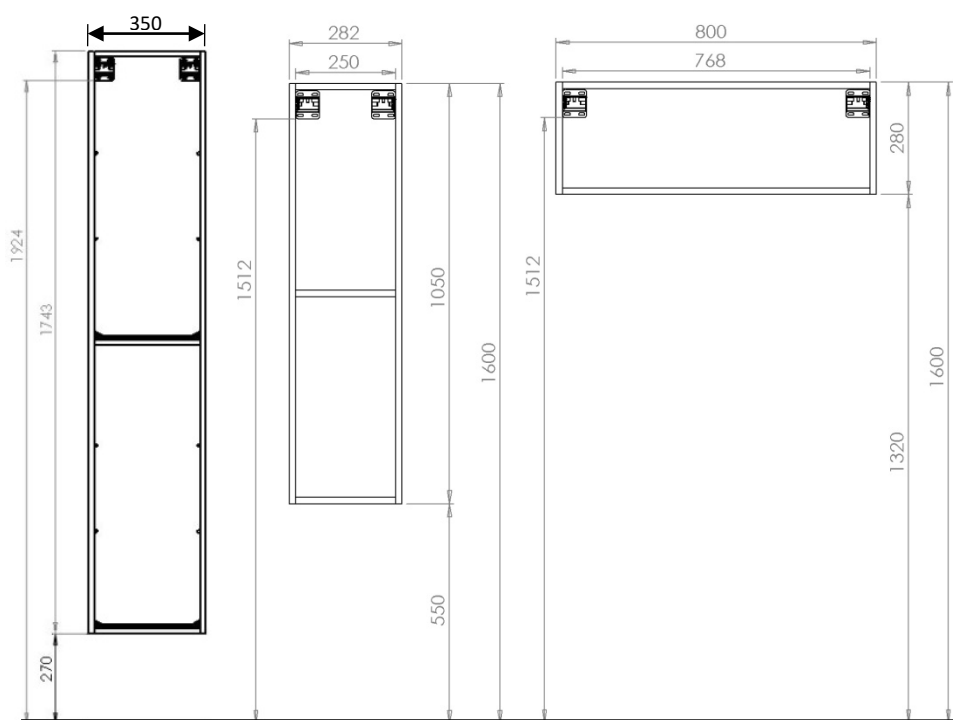


1
Determine the finished height

2
Position the wall plate, mark and drill

3 Fix the first wall plate

4
Place the second wall plate aligning it with the first one



All dimensions are in mm.
The dimensions are given to the bottom of the wall plate.



CAUTION:
Ensure that you use the correct fixing according to the type of wall construction.

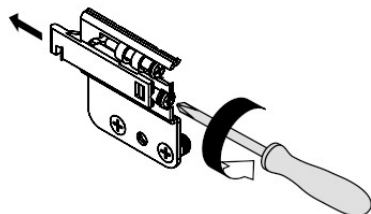
2. REMOVE THE DOOR SEE SEPARATE INSTRUCTIONS ATTACHED



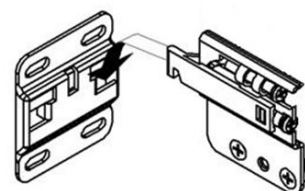
CAUTION :
Use wedges to put the unit on the floor

TALL UNIT INSTALLATION

3. *LOOSEN THE WALL HANGING BRACKETS ON THE UNIT*



4. *HANG THE UNITS ONTO THE WALL PLATES*



5. *FIT THE WALL HANGING BRACKET COVERS « 0272 AND 0004 »*



6. *FIT AND ADJUST THE DOOR, SEE SEPARATE INSTRUCTIONS ATTACHED*



*Make sure the unit is level
So that the adjusting is not too difficult*



MIRROR INSTALLATION

1 FIX THE SCREWS (not provided)



1. DETERMINE THE FINISHED HEIGHT



2. FIX THE FIRST SCREW



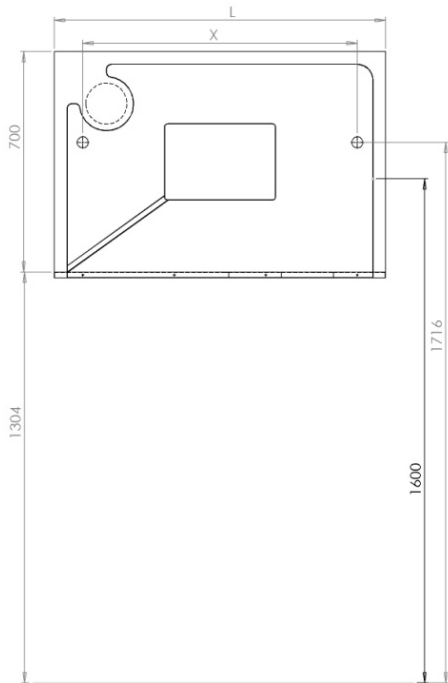
3. THE SCREW MUST PROTRUDE MAXIMUM 8 MM FROM THE WALL



4. FIX THE SECOND SCREW ALIGNING IT WITH THE FIRST ONE



CAUTION :
Ensure that you use the correct fixing according to the type of wall construction

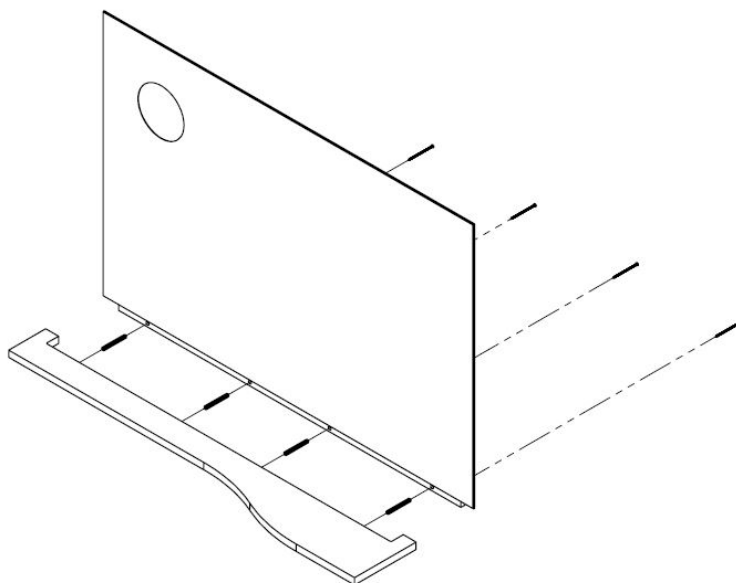


All dimensions are in mm.
Recommended height 1600 mm at the mirror center.

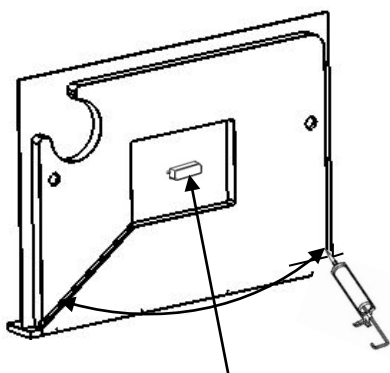
CODE	L	X
JOYAMITAB80G	800	620
JOYAMITAB80D	800	620
JOYAMITAB105G	1050	870
JOYAMITAB105D	1050	870

MIRROR INSTALLATION

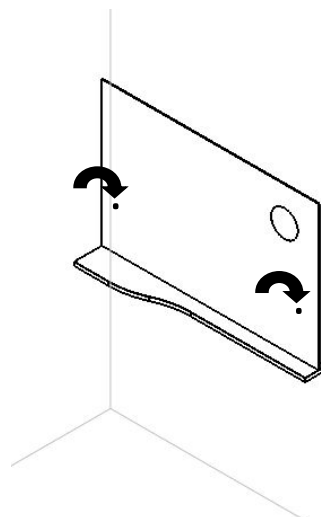
2. SCREW AND FIX THE SHELF



3. HANG THE MIRROR ON THE SCREWS

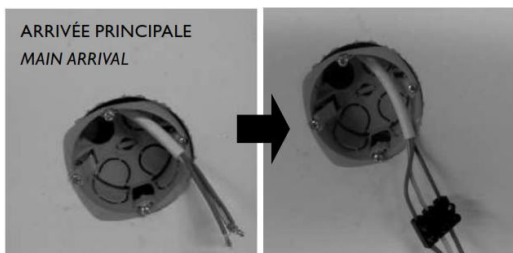


It is recommended to put a silicone point in each bottom corner of the mirror



*Connect the light to the bathroom lighting circuit via an outlet plate
(according to current regulations, the connection must be made by a qualified electrician)*

ARRIVÉE PRINCIPALE
MAIN ARRIVAL



LEVEL
ADJUSTMENT

Insert screwdriver in the rectangular cut then turn right or left to adjust the level

