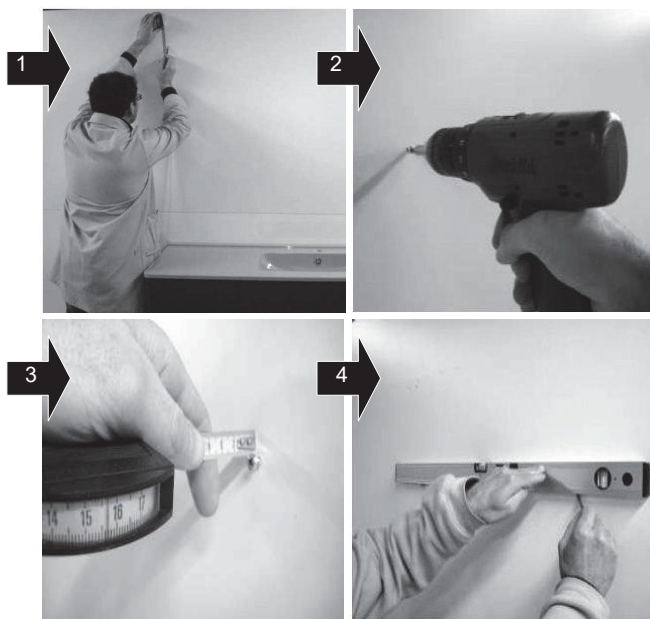


DOLCE MIRROR

INSTALLATION OF MIRROR

1

FIX THE SCREWS (not supplied)



1 Determine the finished height

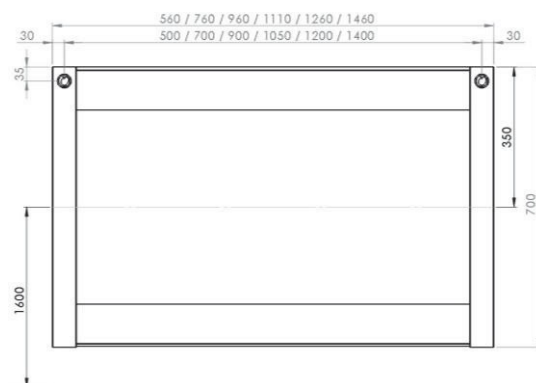
2 Fix the first screw

3 The screw must protrude maximum of 8 mm from the wall

4 Position the second screw aligning it with the first one



CAUTION:
Ensure that you use the correct fixing according to the type of wall construction.

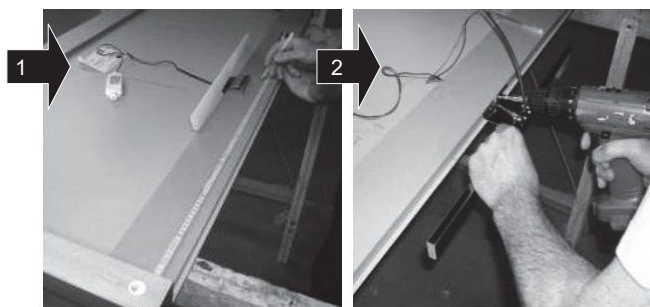


All dimensions are in mm.
Recommended height 1600 mm to the centre of the mirror.

2

lighting option

PREPARATION OF THE ELECTRICAL INSTALLATION



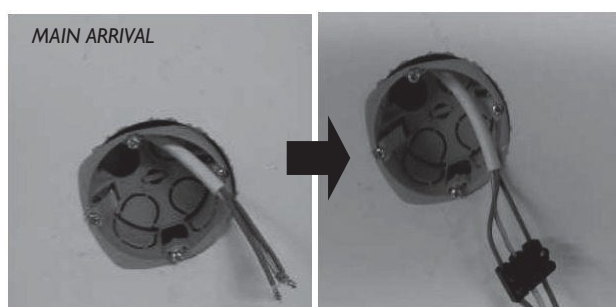
1-Mark the to centre of the mirror

2-Fix the light fitting with the two screws provided

3

lighting option

CONNECT THE LIGHT TO THE BATHROOM LIGHTING CIRCUIT VIA AN OUTLET PLATE
(according to current regulations, the connection must be made by a qualified electrician)



INSTALLATION OF MIRROR

4

HANG THE MIRROR ONTO THE
SCREWS



We recommend a silicone spot on each rear bottom corner of the mirror



HEIGHT ADJUSTMENT

Insert a
screwdriver into
the rectangular
cutout, then turn
right or left to
adjust the level

