

MAMBO VERSO

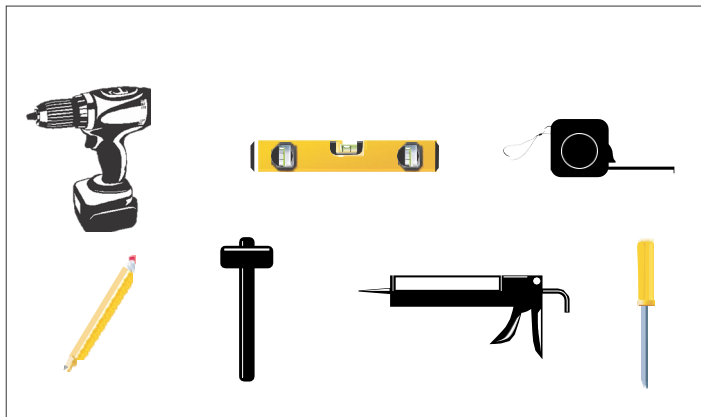


FITTING INSTRUCTIONS

IMPORTANT

PAGE 1 CABINET

INSTALLATION • Unpack the units carefully ensuring not to scratch them with the knife blade.



- Unpack the units carefully ensuring not to scratch them with the knife blade. Inspect every item carefully before installation as no claim for faults or damages will be accepted once the item is installed.
- We recommend that you use protection (for example a blanket) to cover the working area. Mirrors and worktops are very fragile, we recommend that you put them on battens (and never directly onto the floor).
- Our furniture is designed to be fitted on a level, flat finished wall.
- It is imperative that you use a sanitary grade silicone sealant at the back and sides of every worktop as water infiltrations will damage your unit and this is not covered under our product guarantee.
- All surfaces of all units should not be exposed to standing water or persistent humidity. They must be wiped and dried off immediately after use. If your unit is not cared for correctly it will deteriorate and this will not be covered under our product guarantee.
- All our units are guaranteed for 5 years* from date of invoice (1 year for mirrors, electrical items, cisterns, WC frames, sanitary ware, taps and accessories) against all manufacturing defects acknowledged by our company, limited to domestic users.
- The guarantee does not apply to any products that have been misused or abused in any way. The products must be installed and cared for in line with our fitting instructions, local water byelaws, IEE electrical directives and any other applicable regulations.
- In the unlikely event that the product fails within 5 years* (1 year for mirrors, electrical items, cisterns, WC frames, sanitary ware, taps and accessories), we offer a free of charge replacement part (or nearest equivalent). Liability is limited to individual products and does not cover consequential loss/damage or any further unfitting/refitting costs or financial compensation. The customer will be required to pay for the installation cost of the replacement part.

- Wipe and rinse the surface of the furniture after contact with any chemical product.
 - Do not use abrasive cream (cif, etc...), wire wool, scouring pad, solvent, acid, etc...
 - Dry the surface off with a soft cloth after cleaning
 - For mirrors, use a chamois leather, and dry the edges with a suitable soft cloth.
 - Use a dry cloth to clean any electric components, they must be switched off.
- OUR FURNITURE WILL DETERIORATE THROUGH EXCESSIVE WATER SPILLAGE OR HEAVY CONDENSATION. IT IS ADVISED THAT EVERY BATHROOM SHOULD BE WELL VENTILATED AND FITTED WITH A SUITABLE EXTRACTOR FAN TO AVOID ANY PERSISTENT HUMIDITY AND ALL FURNITURE SHOULD BE PROTECTED WITH BATH/SHOWER SCREEN ENCLOSURES TO PRESERVE THEIR QUALITY.

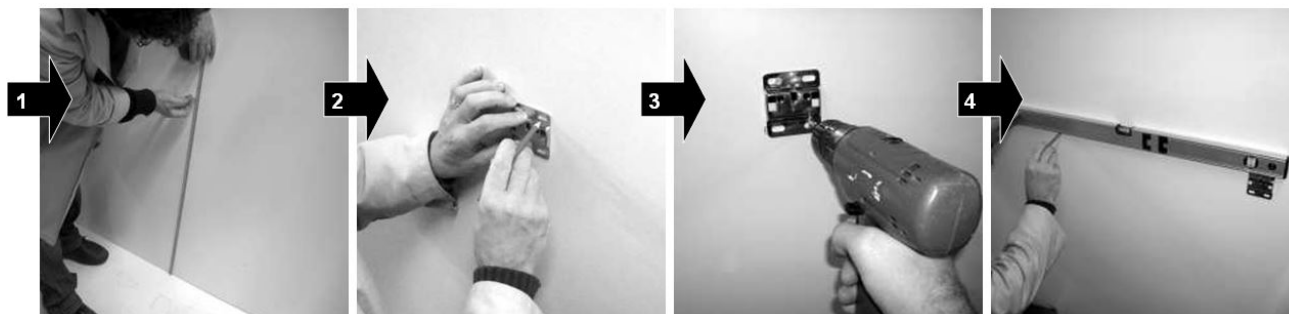
ELECTRICAL INSTALLATION:

All Ambiance Bain units fitted with electrical components (mirrors, mirrored cabinets, sockets, etc...) must only be installed in ZONE 3. Installation and fitting of all electrical items must be completed by a qualified electrician. Any final decisions regarding the installation should also be made by the electrician. All electrical items must be tested prior to installation, as liability is limited to replacement items only.

INSTALLATION OF BASIN UNIT

1. FIX THE WALL PLATES «0271» (screws and wall plugs not included)

0271

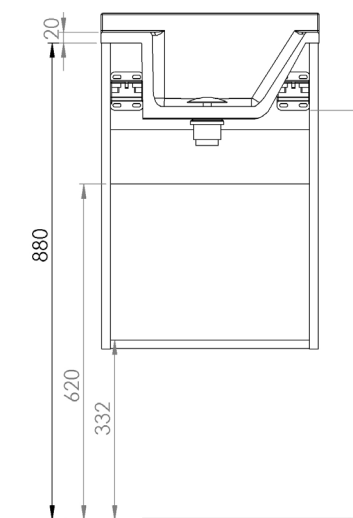


Determine the finished height

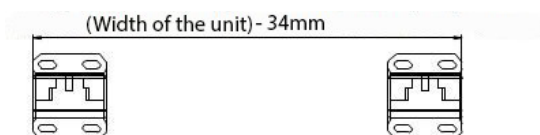
Position the wall plate, mark and drill

Fix the first wall plate

Place the second wall plate aligning it with the first one



Supply and waste evacuation

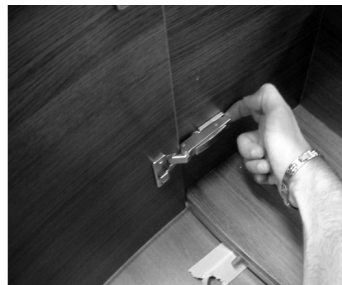


Bracket design may vary due to local regulations



CAUTION:
Ensure that you use the correct fixing according to the type of wall construction.

2. REMOVE THE DOORS, SEE SEPARATE INSTRUCTIONS ATTACHED

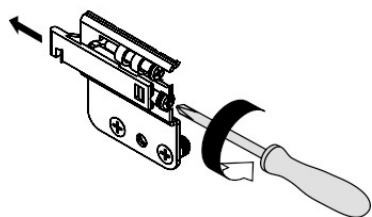


CAUTION :
Use wedges to protect the unit on the floor

BASIN UNIT INSTALLATION

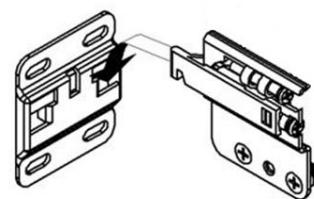
3.

*LOOSEN THE WALL HANGING
BRACKETS ON THE UNIT*



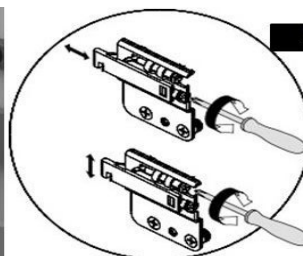
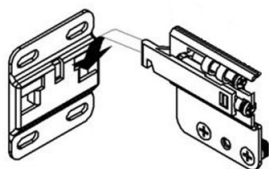
4.

HANG THE UNITS ONTO THE WALL PLATES



6.

FIX THE UNIT ONTO THE WALL



*Hang the unit onto the
wall plates*

*Tighten the brackets on the unit so that
the furniture fits to the wall and adjust
the levels*

BASIN UNIT INSTALLATION

8. APPLY SILICONE ON TOP, BOTH SIDES OF THE UNIT AND ON THE WALL (thickness of the worktop)



FAILURE TO APPLY THIS NECESSARY SEAL WILL INVALIDATE ANY PRODUCT WARRANTY

8. INSTALL THE SMO™ BASIN ON THE UNIT



ADVICE :
Place basin onto unit first then push back to wall. Wipe off any excess silicone.

9. CONNECTING THE PLUMBING, CHECK FOR LEAKS

1
Insert the drain (slotted waste)
in the hole
Not supplied with unit



The connection and elements used are given as an example.

BASIN UNIT INSTALLATION

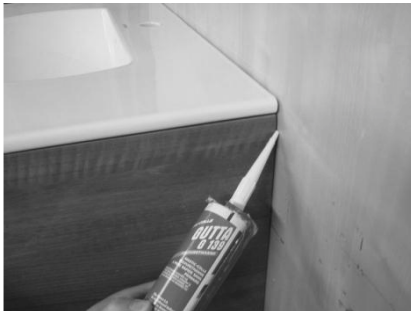
10 APPLY SILICONE SEALS TO ALL EDGES



FAILURE TO APPLY THIS NECESSARY SEAL WILL INVALIDATE ANY PRODUCT WARRANTY



REAR OF BASIN



BETWEEN UNIT & WALL



BETWEEN BASIN & UNIT

11 SET AND ADJUST THE DOOR, SEE SEPARATE INSTRUCTIONS ATTACHED



Make sure the unit is level so that adjusting is not too difficult

11 FIT THE HANDLES

12



Fix the handle «BP» with the screws «0227» The fascia is pre-drilled

Ab
ambiance bain