

AMBIANCE BAIN

BOSS / STAR

FITTING INSTRUCTIONS

IMPORTANT.....	PAGE 2
INSTALLATION OF BASIN UNIT.....	PAGE 3 TO 7



Important:

- Unpack the units carefully ensuring not to scratch them with the knife blade. Inspect every item carefully before installation as no claim for faults or damages will be accepted once the item is installed.

- We recommend that you use protection (for example a blanket) to cover the working area.

Mirrors and worktops are very fragile, we recommend that you put them on battens (and never directly onto the floor).

- Our furniture is designed to be fitted on a level, flat finished wall.

- It is imperative that you use a sanitary grade silicone sealant at the back and sides of every worktop as water infiltrations will damage your unit and this is not covered under our product guarantee.

- All surfaces of all units should not be exposed to standing water or persistent humidity. They must be wiped and dried off immediately after use. If your unit is not cared for correctly it will deteriorate and this will not be covered under our product guarantee.

- All our units are guaranteed for 10 years* from date of invoice (1 year for mirrors, electrical items, cisterns, WC frames, sanitary ware, taps and accessories) against all manufacturing defects acknowledged by our company, limited to domestic users.

- The guarantee does not apply to any products that have been misused or abused in any way.

The products must be installed and cared for in line with our fitting instructions, local water byelaws, IEE electrical directives and any other applicable regulations.

- In the unlikely event that the product fails within 10 years* (1 year for mirrors, electrical items, cisterns, WC frames, sanitary ware, taps and accessories), we offer a free of charge replacement part (or nearest equivalent). Liability is limited to individual products and does not cover consequential loss/damage or any further unfitting/refitting costs or financial compensation.

*The cost of delivery and registration will be charged to the customer. The guarantee is void if the product is not registered.

MAINTENANCE:

- Wipe and rinse the surface of the furniture after contact with any chemical product.

- Do not use abrasive cream (cif, etc...), wire wool, scouring pad, solvent, acid, etc...

- Dry the surface off with a soft cloth after cleaning

- For mirrors, use a chamois leather, and dry the edges with a suitable soft cloth.

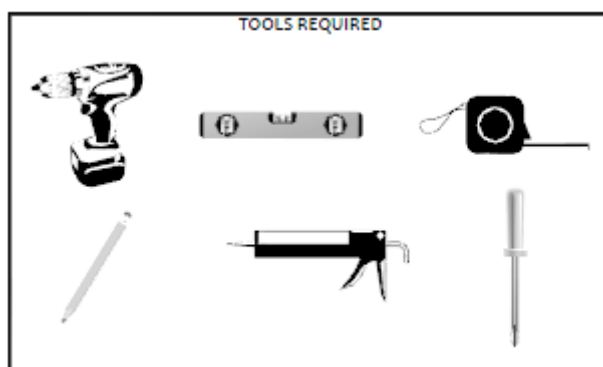
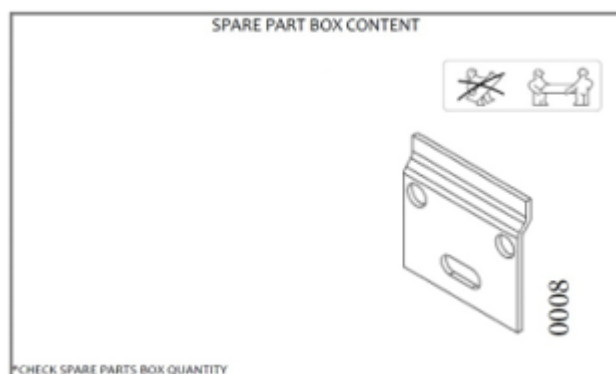
- Use a dry cloth to clean any electric components, they must be switched off

OUR FURNITURE WILL DETERIORATE THROUGH EXCESSIVE WATER SPILLAGE OR HEAVY CONDENSATION. IT IS ADVISED THAT EVERY BATHROOM SHOULD BE WELL VENTILATED AND FITTED WITH A SUITABLE EXTRACTOR FAN TO AVOID ANY PERSISTENT HUMIDITY AND ALL FURNITURE SHOULD BE PROTECTED WITH BATH/SHOWER SCREEN ENCLOSURES TO PRESERVE THEIR QUALITY.

ELECTRICAL INSTALLATION:

All Ambiance Bain units fitted with electrical components (mirrors, mirrored cabinets, sockets, etc...) must only be installed in ZONE 3. Installation and fitting of all electrical items must be completed by a qualified electrician. Any final decisions regarding the installation should also be made by the electrician. All electrical items must be tested prior to installation, as liability is limited to replacement items only.

All information is downloadable from the website www.ambiancebain.co.uk

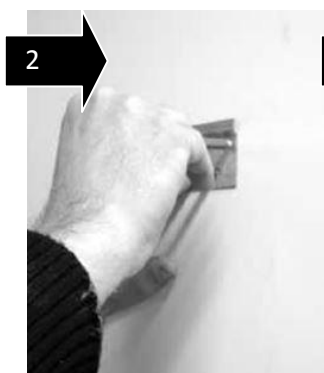


INSTALLATION OF BASIN UNIT

1. FIX THE WALL PLATES "0008" (screw and wall plugs not included)



1 Determine the finished height



2 Position the plate, mark and drill

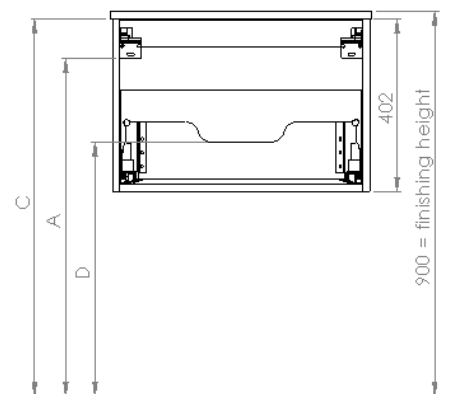
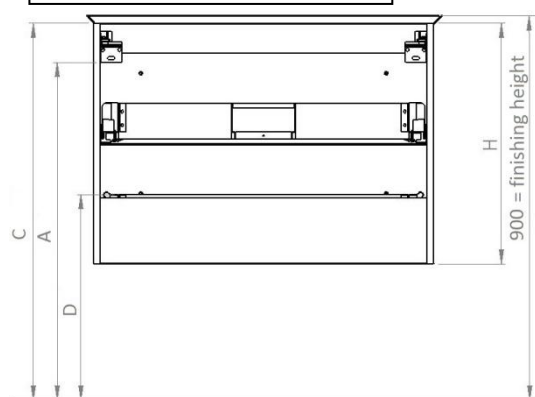


3 Fix the first wall plate

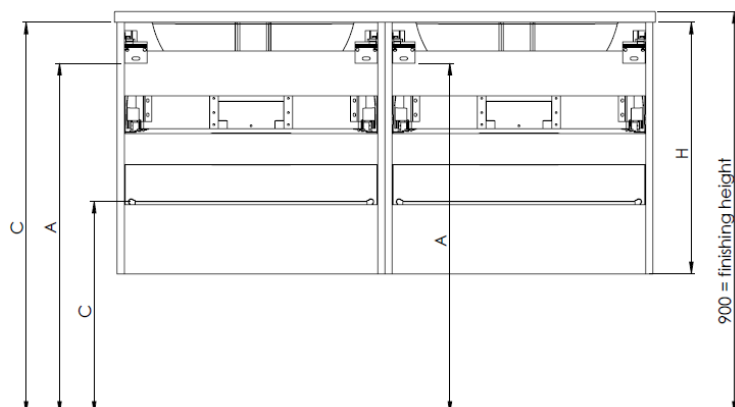


4 Place the second wall plate aligning it with the first one

TYPE 1 : 1 UNIT CONCEPT



TYPE 2 : 2 UNITS CONCEPT



CERAMIC BASINS						
CODE	H	A	B	C	D	TYPE
BOSS601DRPM	402	788	/	880	593	1
BOSS801DRPM	402	788	/	880	593	1
BOSS1202DRPM	402	788	/	880	593	2
BOSS602DRPM	564	788	/	880	471	1
BOSS802DRPM	564	788	/	880	471	1
BOSS1204DRPM	564	788	/	880	471	2

STARON WORKTOP						
CODE	H	A	B	C	D	TYPE
STAR601DRPM	402	796	/	888	601	1
STAR801DRPM	402	796	/	888	601	1
STAR1202DRPM	402	796	/	888	601	2
STAR602DRPM	564	796	/	888	479	1
STAR802DRPM	564	796	/	888	479	1
STAR1204DRPM	564	796	/	888	479	2

All dimensions are in mm.

The dimensions are given to the bottom of the wall plate.



CAUTION:

Ensure that you use the correct fixing according to the type of wall construction.

DIMENSION ARE GIVEN FOR A FINISHING
HEIGHT OF 900 MM

INSTALLATION OF BASIN UNIT

2. REMOVE THE DRAWERS, SEE INSTRUCTIONS IN SPARE BAG

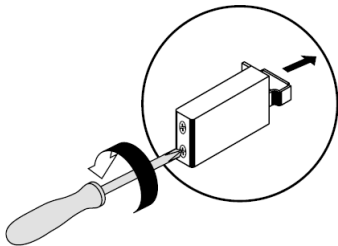


ADVICE :

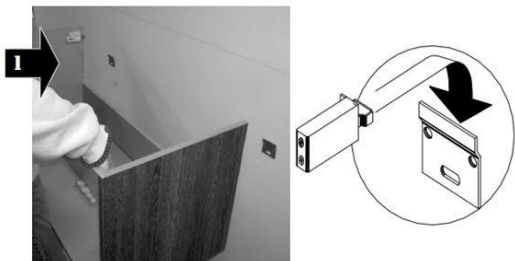
Use wedges to put the unit on the floor



3. LOOSEN THE WALL HANGING BRACKETS ON THE UNIT



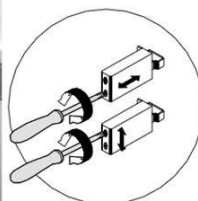
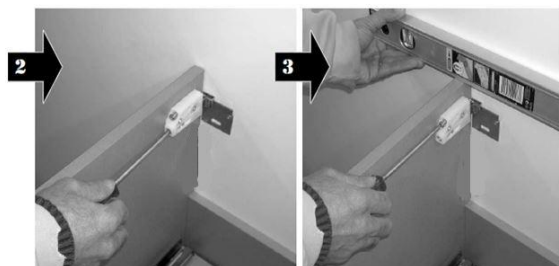
4. FIX THE UNIT ON THE WALL



CAUTION :

Ensure that you use the correct fixing according to the type of wall construction

1 Adjust the level of the unit



2 Tighten the brackets on the unit so that furniture fits to the wall

3 Adjust the level of the unit

For double unit : align and screw the two units together to create the 120cm double unit.



A. INSTALLATION OF CERAMIC BASIN (BOSS UNITS)

5. APPLY SILICONE ONTO THE UNIT AND CARCASS EDGES



7. INSTALL THE BASIN ONTO THE UNIT

CONNECT THE PLUMBING, CHECK FOR LEAKS

8. FIT THE WALL HANGING BRACKET COVERS "0003 and 0004"



9. APPLY SILICONE SEALS TO ALL EDGES



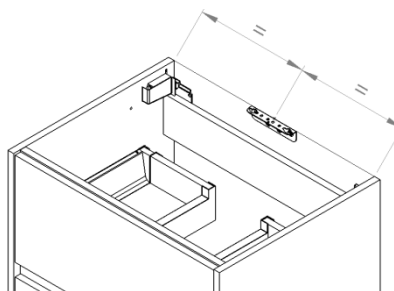
FAILURE TO APPLY THIS NECESSARY SEAL
WILL INVALIDATE ANY PRODUCT WARRANTY

10. REFIT AND ADJUST THE DRAWERS, SEE SEPARATE INSTRUCTION ATTACHED



B. INSTALLATION OF STARON WORKTOP (STAR UNITS)

6. POSITION, MARK AND DRILL
THE SUPPORT FIXING ON THE WALL

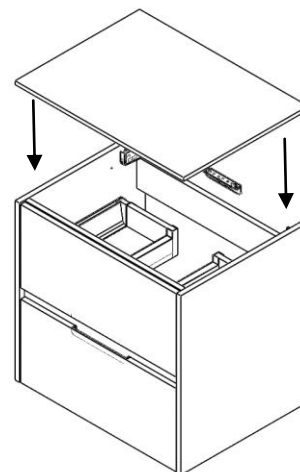


7. APPLY SILICONE ONTO THE UNIT,
THE SQUARE AND CARCASS EDGES



CONNECT THE PLUMBING, CHECK FOR LEAKS

8. INSTALL THE WORKTOP ONTO THE
UNIT



9. APPLY SILICONE SEALS TO ALL
EDGES



FAILURE TO APPLY THIS NECESSARY SEAL
WILL INVALIDATE ANY PRODUCT WARRANTY



10. REFIT AND ADJUST THE DRAWERS, SEE SEPARATE INSTRUCTION ATTACHED

