

CONCEPT KETTY DUO

SUMMARY

1. Quality standard
2. Product overview
3. Assembly
 - a. Vanity unit
 - b. Column unit
4. Maintenance/cleaning



1. Quality standard

Our furniture complies with standard NF 022 - NF AMEUBLEMENT MOBILIER DOMESTIQUE and our washbasins comply with standard NF EN 14688 - APPAREIL SANITAIRE - LAVABOS.

2. Product overview

KETTY DUO : Bi-material aesthetics - Optimal storage/optimised functionality - Wide range of dimensions - Storage column matching the vanity unit.

3. Assembly

Important:

- Unpack the units carefully ensuring not to scratch them with the knife blade. Inspect every item carefully before installation as no claim for faults or damages will be accepted once the item is installed.
- We recommend that you use protection (for example a blanket) to cover the working area.

Mirrors and worktops are very fragile, we recommend that you put them on battens (and never directly onto the floor).

- Our furniture is designed to be fitted on a level, flat finished wall.
- It is imperative that you use a sanitary grade silicone sealant at the back and sides of every worktop as water infiltrations will damage your unit and this is not covered under our product guarantee.
- All surfaces of all units should not be exposed to standing water or persistent humidity. They must be wiped and dried off immediately after use. If your unit is not cared for correctly it will deteriorate and this will not be covered under our product guarantee.
- All our units are guaranteed for 10 years* from date of invoice (1 year for mirrors, electrical items, cisterns, WC frames, sanitary ware, taps and accessories) against all manufacturing defects acknowledged by our company, limited to domestic users.
- The guarantee does not apply to any products that have been misused or abused in any way.

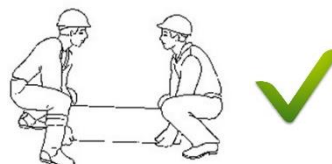
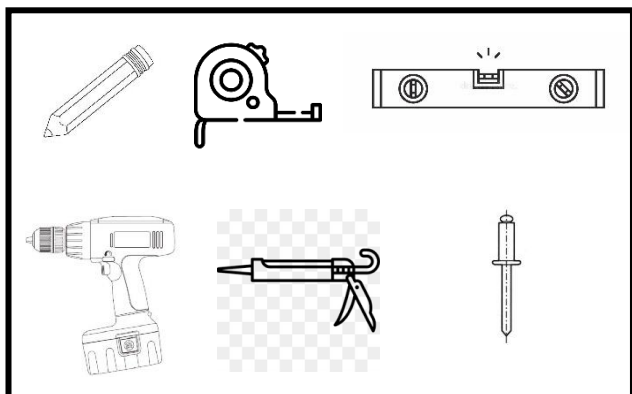
The products must be installed and cared for in line with our fitting instructions, local water byelaws, IEE electrical directives and any other applicable regulations.

- In the unlikely event that the product fails within 10 years* (1 year for mirrors, electrical items, cisterns, WC frames, sanitary ware, taps and accessories), we offer a free of charge replacement part (or nearest equivalent). Liability is limited to individual products and does not cover consequential loss/damage or any further unfitting/refitting costs or financial compensation.

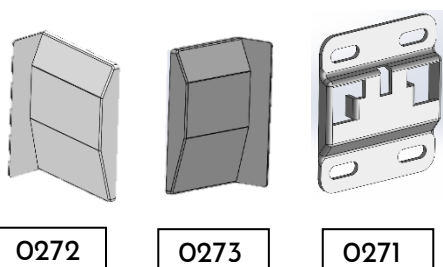
The customer will be required to pay for the installation cost of the replacement part.

* Upon completion and registration of the enclosed Guarantee card, refer to general terms of sale

Tools required :

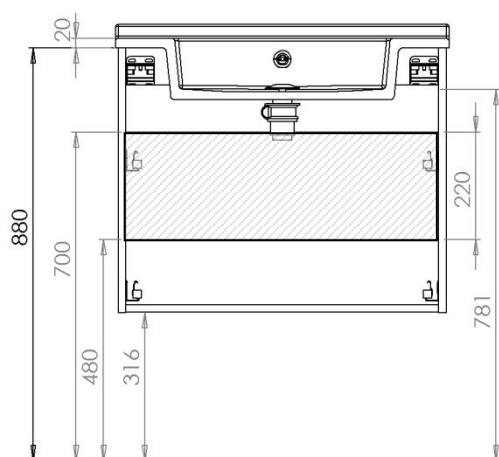
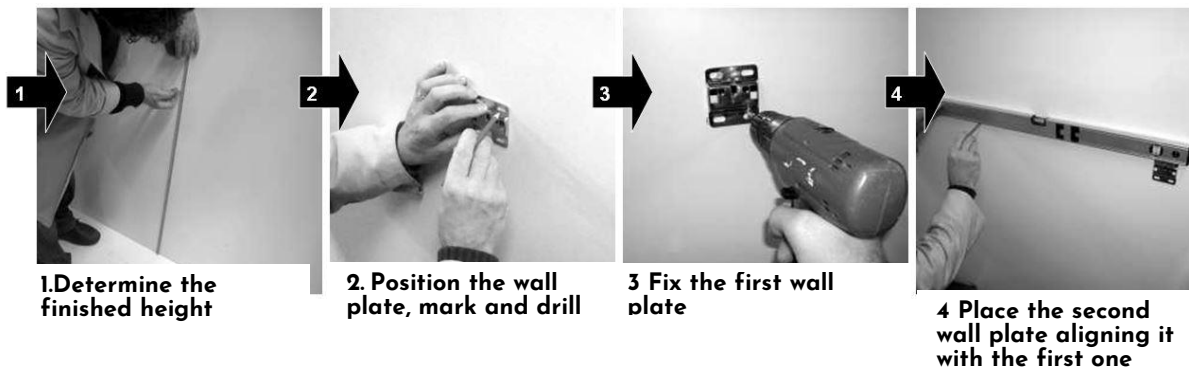


Spare part box content :



INSTALLATION OF BASIN UNIT

1. Fix the wall plates « O271 » (Screws and wall plugs not included)



All dimensions are in mm.
The dimensions are given to the bottom of the wall



Incoming supply area

(Width of the unit without curved side panel) - 34 mm



CAUTION:

Ensure that you use the correct fixing according to the type of wall construction.

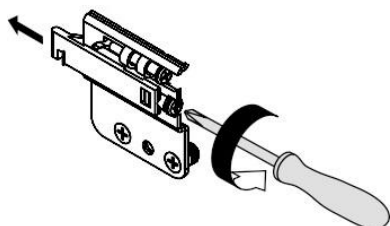
2. Remove the drawers

(See leaflet G005 for drawer assembly and adjustment, available at www.ambiancebain.co.uk)

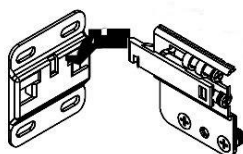


CAUTION:
Use wedges to put the unit on the floor

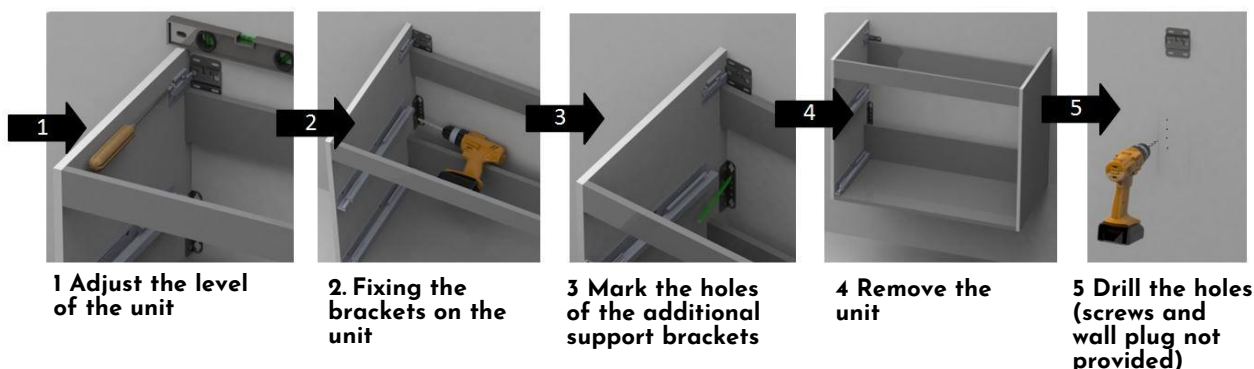
3. Loosen the wall hanging brackets on the unit



4. Hang the unit on the wall plates

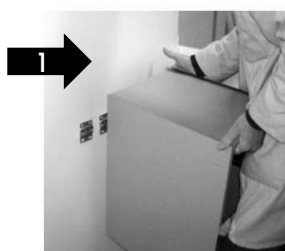


5. Mark the fixing brackets

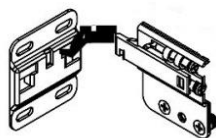


CAUTION:
Ensure that you use the correct fixing according to the type of wall construction

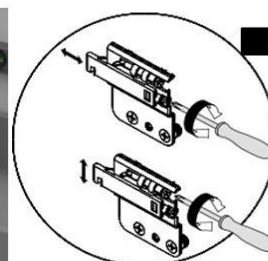
6. Fix the unit on the wall



1 Hang the unit on the wall plates



2 Tighten the brackets on the unit so that the furniture fits to the wall and adjust the levels

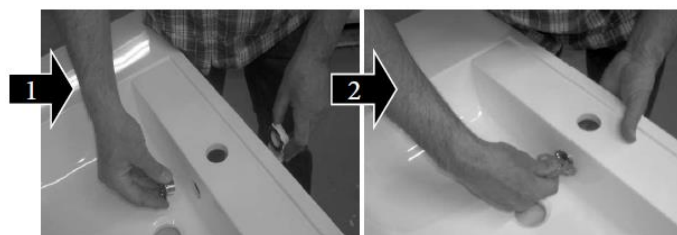


3 Fix the brackets to the wall (screws and wall plug not provided)

7. Fasten furniture together with the assembly bolts « 0248 and 0250 »



8. Install the overflow provided



1 Set up the overflow

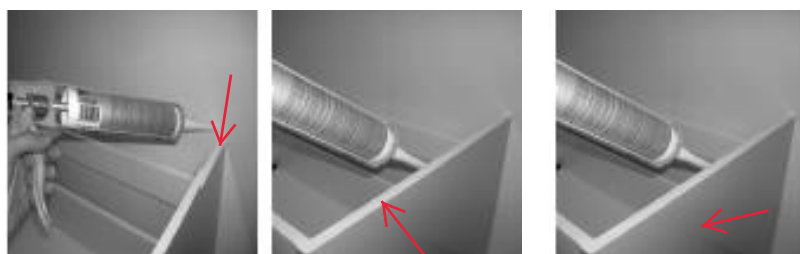
2 Screw overflow ring with the key provided



CAUTION:

Tighten only by hand
Do not forget the seals

9. Apply silicone on top and side of unit



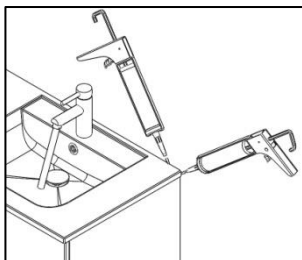
10. Install the SMO top on the unit



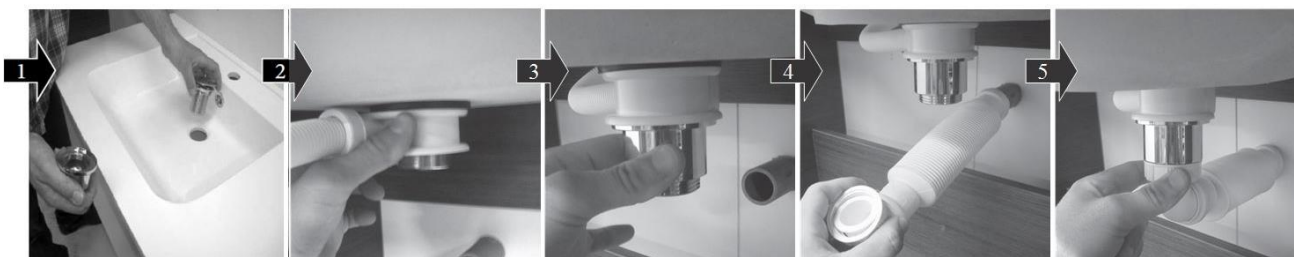
TIP:

Do not place the tray on the wall until it has been placed on the furniture to avoid touching the silicone on the wall when lowering the tray.

Apply silicone



11. Connecting the plumbing, check for leaks.



1 Insert the drain (slotted waste) in the hole
Not supplied with unit

2 Connect the overflow to the waste

3 Screw the waste

4 Connect the trap

5 Screw the trap to the waste

The connection and elements used are given as an example.



CAUTION:

Tighten only by hand

Do not forget the seals

12. Set and adjust the drawer.

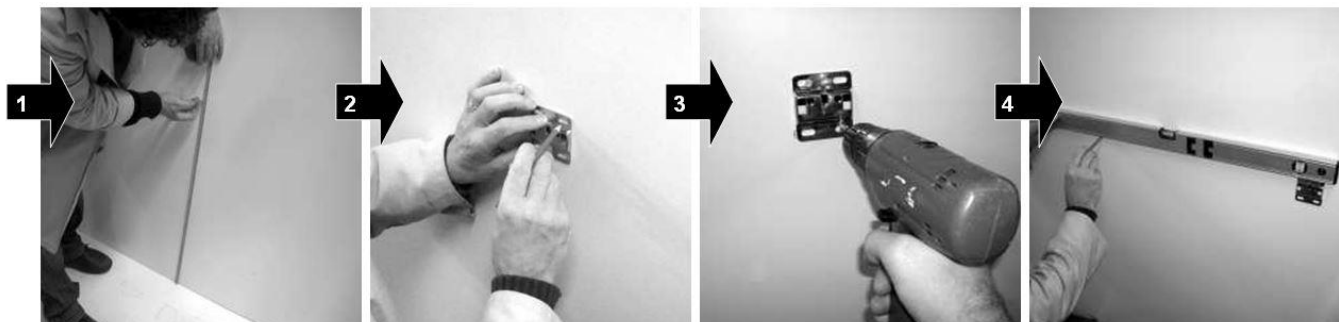
(See leaflet G005 for drawer assembly and adjustment, available at www.ambiancebain.co.uk)



Make sure the unit is level so that the adjustment is not too difficult

INSTALLATION OF TALL UNIT

1. Fix the wall plates « 0271 » (Screws and wall plugs not included)

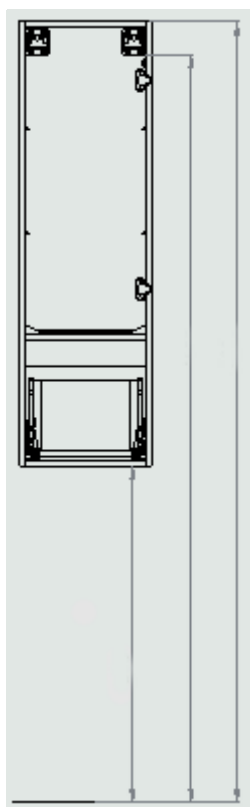


1 Determine the finished height

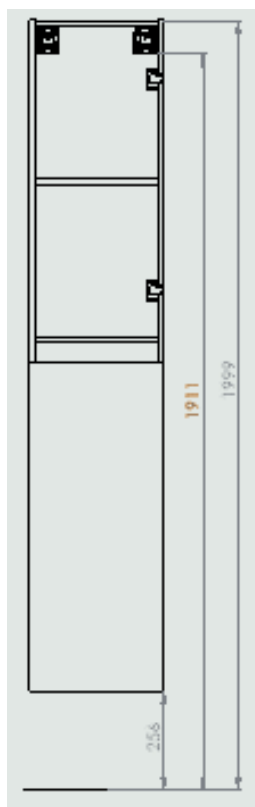
2 Position the plate, mark and drill

3 Fix the first wall plate

4 Place the second wall plate aligning it with the first one



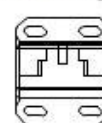
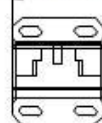
DUOPCOL D/G.



DUOCOL D/G.

All dimensions are in mm.
The dimensions are given at the bottom of the wall plate.

(Width of the unit without curved side panel) - 34 mm



CAUTION :

Ensure that you use the correct fixing according to the type of wall construction

2. Remove the doors

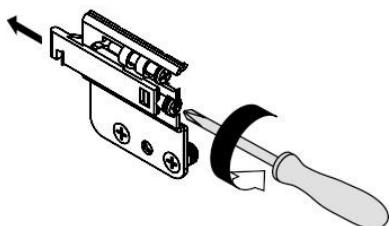
(See leaflet G005 for drawer assembly and adjustment, available at www.ambiancebain.co.uk)



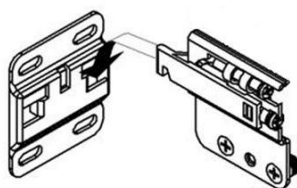
TIP :

Use wedges to put the unit on the floor

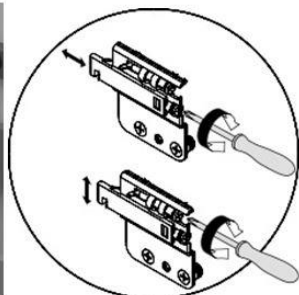
3. Loosen the wall hanging brackets unit



4. Hang the unit on the wall plate



5. Tighten the brackets on the unit so that the furniture fits to the wall and adjust the levels



6. Set up the wall hanging bracket covers « 0272 » and « 0273 »



7. Set and adjust the door.

(See leaflet G005 for installation and adjustment of drawers and doors, available at www.ambiancebain.co.uk)

Make sure the unit is level So that the setting is not too difficult



4. Maintenance / Cleaning

Wipe and rinse the surface of the furniture after contact with any chemical product.

- Do not use abrasive cream (cif, etc...), wire wool, scouring pad, solvent, acid, etc...
- Dry the surface off with a soft cloth after cleaning
- For mirrors, use a chamois leather, and dry the edges with a suitable soft cloth.
- Use a dry cloth to clean any electric components, they must be switched off

OUR FURNITURE WILL DETERIORATE THROUGH EXCESSIVE WATER SPILLAGE OR HEAVY CONDENSATION. IT IS ADVISED THAT EVERY BATHROOM SHOULD BE WELL VENTILATED AND FITTED WITH A SUITABLE EXTRACTOR FAN TO AVOID ANY PERSISTENT HUMIDITY AND ALL FURNITURE SHOULD BE PROTECTED WITH BATH/SHOWER SCREEN ENCLOSURES TO PRESERVE THEIR QUALITY.