

## INSTALLATION INSTRUCTIONS

### Shower Trays & Wall Panels

#### IMPORTANT

Please check your SMO™ shower tray/panel for any transit damage, correct size and colour and any manufacture defect. Fitting of the product is acceptance of its specification and quality.

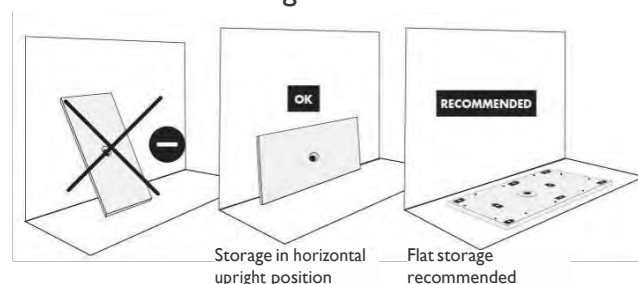
Your tray or panel should preferably be stored flat, if space is not available stand as straight as possible horizontally (see pictures below).

#### NOTE - ALL TRAYS

It is imperative water out flow is tested before final tray installation and any tiling is carried out and installer and client are satisfied waste water is draining away.

No liability will be accepted by Ambiance Bain after this stage if there are any issues with outflow.

#### Recommended Storage



#### CUTTING

Measure twice, cut once!

Cut from finished side, cover area with protective tape to avoid marking surface and avoid shards. A fine-toothed blade is best for cutting the SMO™, either a hand saw or electric jigsaw. Alternatively, a diamond tipped continuous edge circular blade.

#### SEALANT

Ensure Ambiance bain JOINPAN or a good quality sanitary grade silicone is used for sealing joints.

#### ADHESIVE

We recommend Ambiance bain COLLPAN adhesive or a good quality adhesive-based silicone is used for fixing wall panels

#### MAINTENANCE

Most household cleaning fluids can be used.

Avoid: Water temperature over 60 degrees, abrasive cleaners, steel wool, rough sponges and ammonia based products (also, be careful with hair dye).

If accidentally scratched or chipped, repair and polish kits are available.

#### QUESTIONS

If the consumer or installer are uncertain regarding any aspect concerning the AB shower space or its installation please consult our technical advisers prior to commencing the installation.



## INSTALLATION INSTRUCTIONS

**Waste outlet** - refer to manufacturer's instructions.

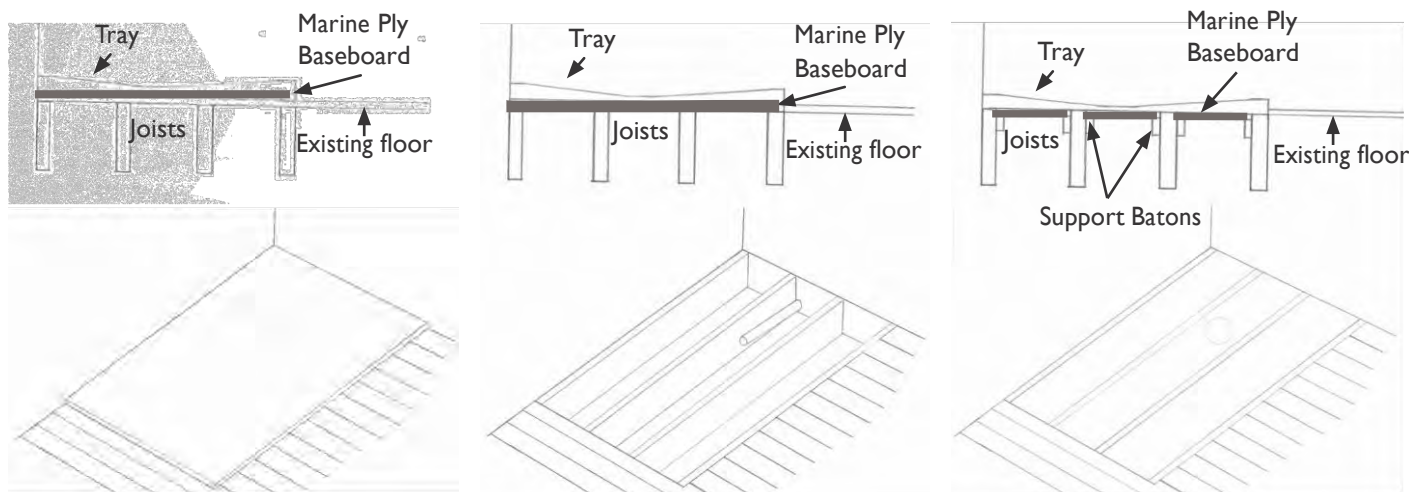
### PREPARATION (All Trays)

Place the tray in situ and mark around the tray as shown.

Prepare a rigid base using 18mm marine plywood. This can be overlaid over the existing floor boards, laid directly onto floor joists or if required for the tray to sit lower the base can be cut and laid at joist level. Bear in mind waste outlet position and running of waste pipe. We recommend a single outlet pipe of 50mm diameter to maximise water outflow.

If the tray is required to sit flush with the floor tiles it is the installer's responsibility to adjust levels to suit. Test shower tray drainage from all 4 corners and edges of tray as well as waste outflow before continuing with tray installation.

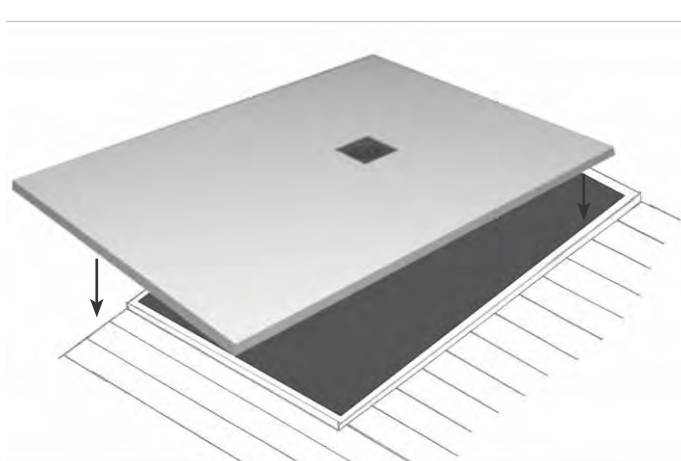
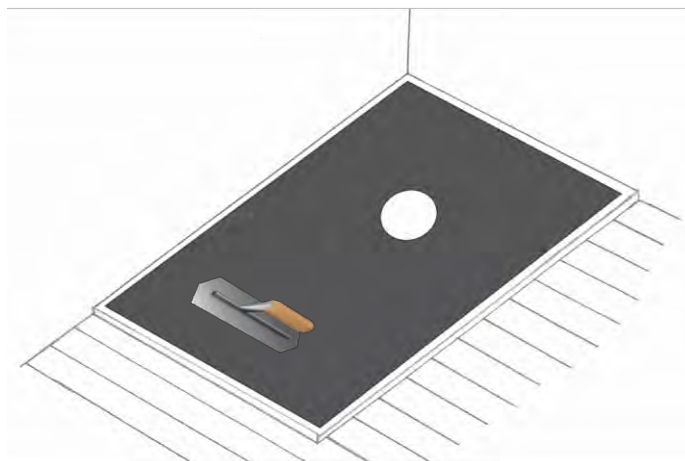
If a full base board is not possible our solid trays may be installed onto joists with minimum 400mm centres and additional support completely around perimeter of waste area and the whole tray.



### FITTING

#### ALTIMA & ALTIMAX – ZBDEC TRAYS

Cover base with a level solid bed of 5:1 mix sand cement or cement-based floor tile adhesive. Gently lower the tray into place and apply pressure to bed it down and ensure it is completely level before allowing to set for 24 hours. Connect waste and re-test outflow. Once in place seal edges to wall using silicone.



## INSTALLATION INSTRUCTIONS

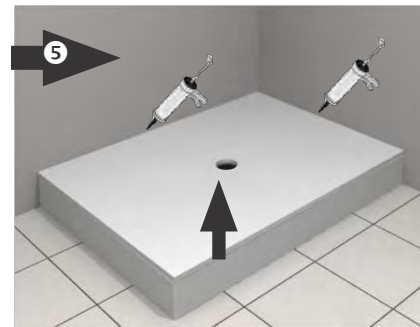
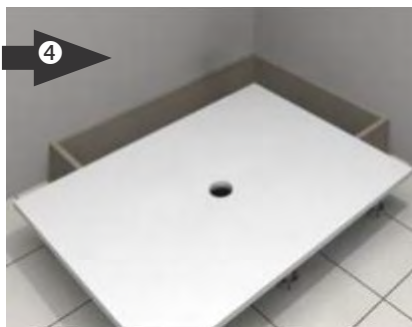
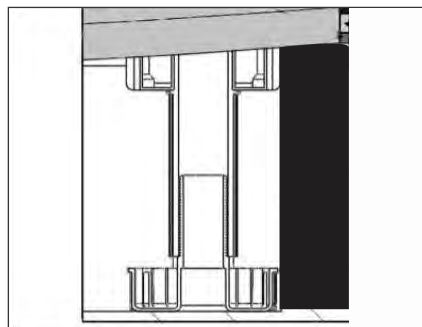
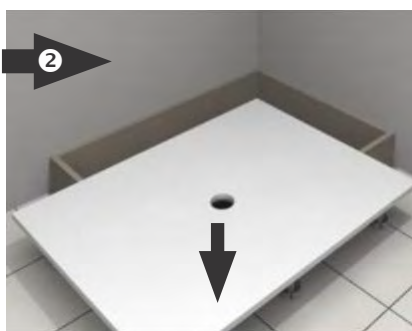
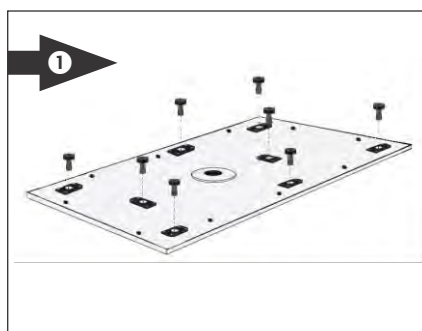
### FITTING UNIVERSAL PLUS

Cover outside perimeter of tray area with 5:1 mix sand cement and surround central waste outlet with a raised ring of the same mix. Gently lower the tray into place and apply pressure to bed it down and ensure it is completely level before allowing to set for 24 hours. Connect waste and outflow. Once in place seal edges to wall using silicone.



### ELEGANCE PLUS

1. Fix legs to underside of tray.
2. Place the tray into position, adjust leg levels and secure into position with silicon before final fixing.
3. It is recommended to install an outlying support belt maximum 50mm thick to sit the edges of the tray onto (lightweight tiling board is ideal). Ensure tray is stable and level. Outside supports are best installed after leg adjustment and levels are set. Silicone can be used to hold the tiling boards in place.
4. Carefully place tray into position, siliconing onto tiling board perimeter. Connect waste and retest outflow.
5. Once in place seal edges to wall using silicone.



## INSTALLATION INSTRUCTIONS

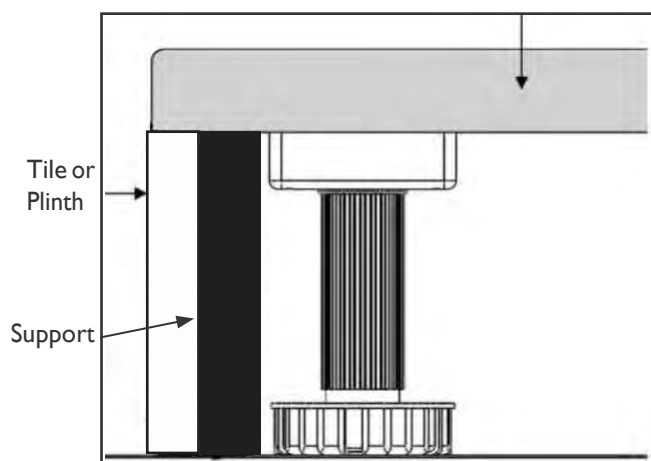
### OKA - ZBOKA

Cover base of tray area with 5:1 mix sand cement. Gently lower the tray into place and apply pressure to bed it down and ensure it is completely level before allowing to set for 24 hours. Connect waste and outflow. Once in place seal edges to wall using silicone.



### OPTIONAL SMO™ PLINTH FOR SHOWER TRAYS

Tray sides can be either tiled onto tiling support board or an optional made to measure SMO™ plinth (10mm) can be used.





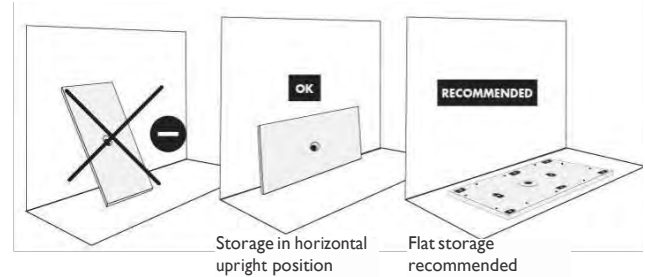
# INSTALLATION INSTRUCTIONS

## SMO™ WALL PANELS (ZPAN & ZPDEC) IMPORTANT

Please check your SMO™ wall panel for any transit damage, correct size and colour and any manufacture defect. Fitting of the product is acceptance of its specification and quality.

Your panel should preferably be stored flat, if space is not available, stand as straight as possible horizontally. See pictures for details.

### Recommended Storage



## CUTTING

Measure twice, cut once!

Cut from finished side, cover area with protective tape to avoid marking surface and avoid shards. A fine-toothed blade is best for cutting the SMO™, either a hand saw or electric jigsaw. Alternatively, a diamond tipped continuous edge circular blade.

## SEALANT

Ensure Ambiance bain JOINPAN or a good quality sanitary grade silicone is used for sealing joints.

## ADHESIVE

We recommend Ambiance bain COLLPAN adhesive or a good quality adhesive-based silicone is used for fixing wall panels

## MAINTENANCE

Most household cleaning fluids can be used.

Avoid: Water temperature over 60 degrees, abrasive cleaners, steel wool, rough sponges and ammonia based products (also, be careful with hair dye).

If accidentally scratched or chipped, repair and polish kits are available

## QUESTIONS

If the consumer or installer are uncertain regarding any aspect concerning the AB shower space or its installation please consult our technical advisers prior to commencing the installation.

## PREPARATION

The surface behind the panels must be of good construction and if necessary a waterproof sealant applied prior to fixing any panels.

## INSTALLATION INSTRUCTIONS

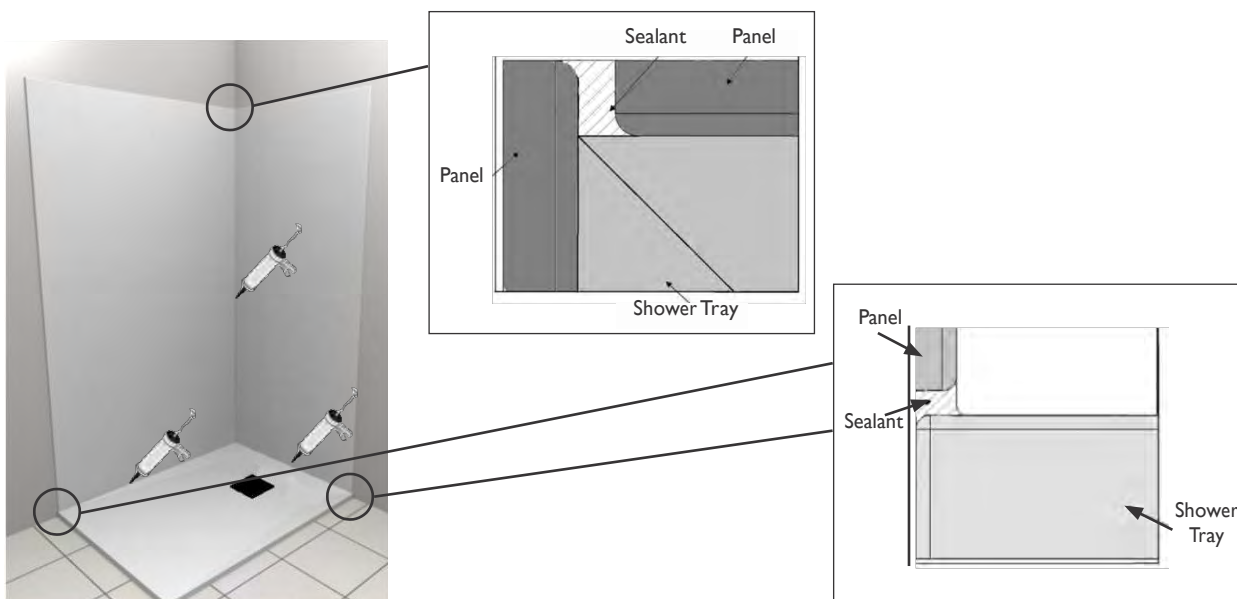
### INSTALLATION

We recommend to dry fit the panels and mark out any holes or cuts that need to be made.

Apply adhesive to wall in vertical lines as shown, no more than 200mm apart and around the perimeter edge.

Carefully set panel in place and push onto adhesive. Ensure all edges are sealed to wall behind to prevent any future water ingress.

Remember to seal behind shower fitting wall plates and shower door profile screw holes! Smooth excess silicon. Once all panels are installed, we recommend putting supports in place for 24 hours until the adhesive has cured. Apply a discreet angled silicon bead to to all joints for a final decorative and perfect seal.

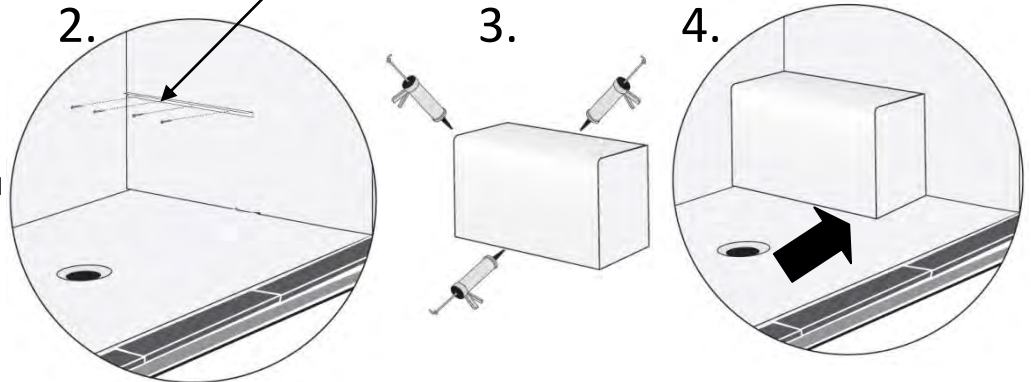


# INSTALLATION INSTRUCTIONS

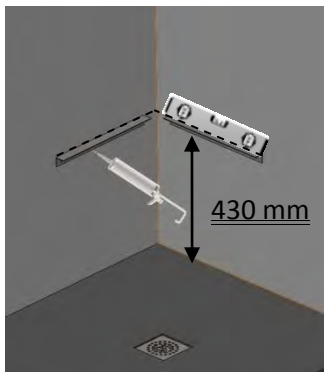
## SEAT

Refer to the section about drilling

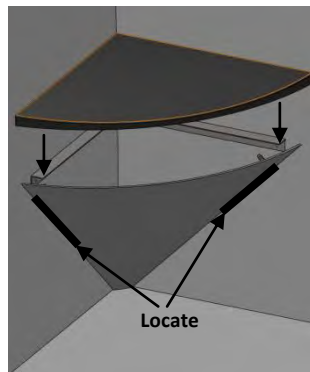
1. Place the seat in its intended final location. Mark and trim/scribe to suit the tray gradient, if necessary.
2. Screw and silicon the support bracket into position (do not forget to pre-drill the SMO™).
3. Generously apply sanitary silicon to all the required edges.
4. Position the seat in its location and then remove the excess silicon. Leave to dry for minimum 24 hours, before use.



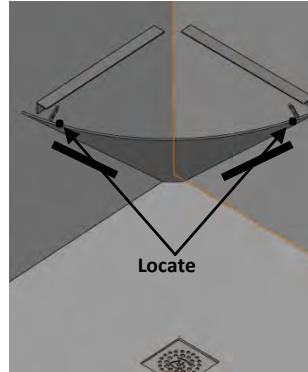
## CORNER SEAT



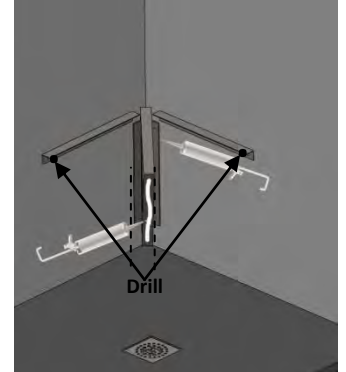
1. Screw and silicon the wall brackets at 430mm height (check they are level and will be at the same height and level with the central bracket)



2. Position the seat and cowl / shell beneath. Draw marks for the cowl/shell position.  
⚠ If necessary, trim/scribe the seat and cowl/shell if the corner angle is not exactly 90°.



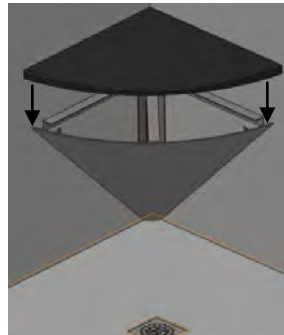
3. Mark the hole in the cowl/shell fixing lugs.



4. Remove the cowl/shell. Position and fix the brackets (do not forget to pre-drill the SMO™). Screw and silicon the central support bracket into position .



5. Position the cowl/shell and screw the brackets. Silicon the top of the 3 brackets to fix the seat.



6. Position the seat onto the brackets in its final position.



7. Silicon seal and smooth all joints between seat and cowl/shell and wall.

Leave to dry for minimum 24 hours, before use.