

SHOWER WASTE BONDOUSC

SUMMARY

1. Quality standard
2. Product overview
3. Assembly
4. Maintenance/Cleaning

1. Quality standard

All our products correspond to the active standards related to sanitary furniture, namely NF-22 for bathroom furniture and EN-251 for shower equipment.

2. Product overview

BONDOUSC drain: Drain adapted for Ø90 shower tray, without cover. Efficient flow rate. Horizontal outlet. Easy to clean. Access to pipes.

Suitable for our Altima, Universal Plus, And Elegance Plus Shower Trays

Assembly



- (a)
- (b) Bucket
- (c) Drain head
- (d) Gasket
- (e) Drain
- (f) Compression gasket
- (g) Nut

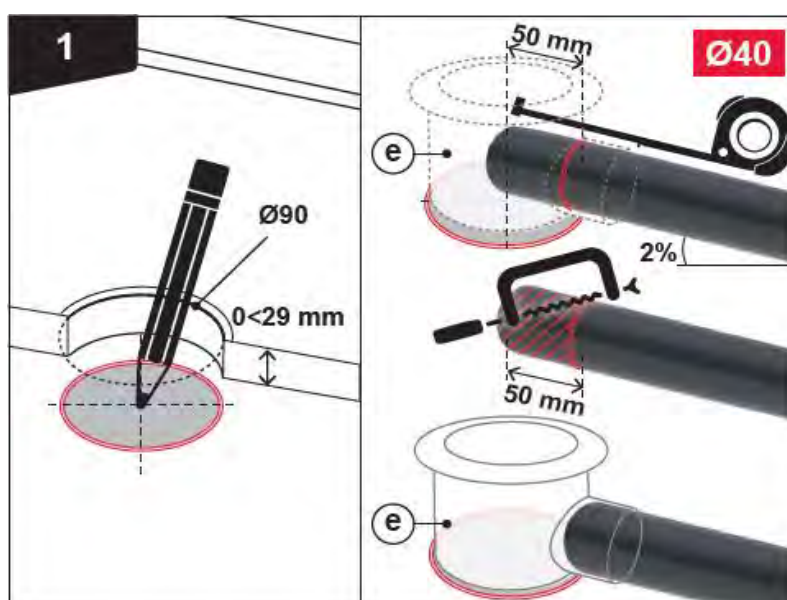
 NOT INCLUDED



Dimension :



Assembly :

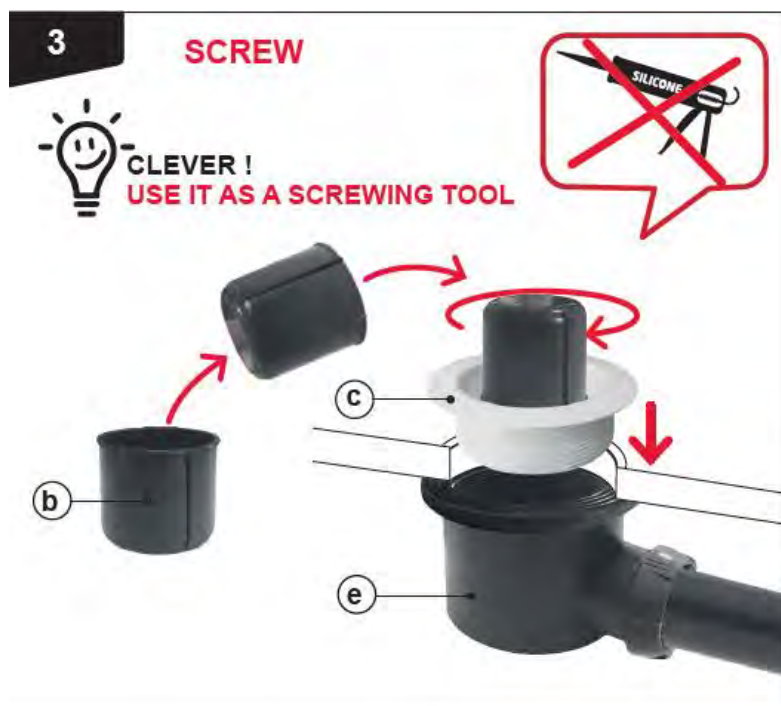


1- Pre-positioning the shower tray. Mark the location of the waste body (e) under the tray with the pencil. Remove the tray. Define the length and location of the waste pipe.



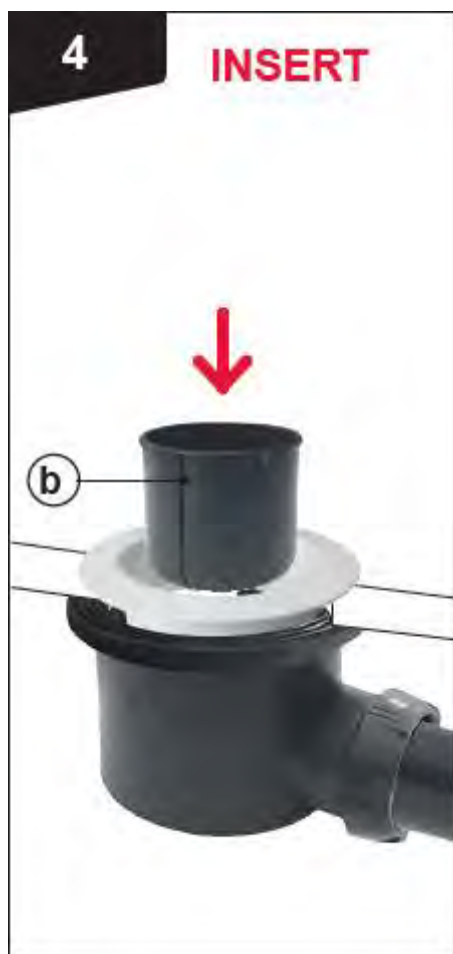
2- Connect the waste body (e) to the waste pipe while respecting a slope of 2%, depending on the model : Ø40 outlet to compression fit and/or glue (ABS/PVC solvent glue), Ø40 UK outlet to compression fit and/or solvent glue (ABS/PVC glue).

OBSERVE THE DRYING TIME INDICATED FOR THE GLUE.



3- Position the tray. Secure the waste body (c) using the flange, use the cup (b) to tighten.

SILICONE MUST NOT BE USED



4- Insert the cup (b) in the direction indicated.

3. Maintenance/Cleaning



To ensure proper drainage, remove, clean and reinsert the cup (b) regularly. Clean only with soapy water. Access to the pipes possible using a drain unblocker.